



LFM
lyofan

Catalog 2023



Introduction to LYOFAN

LYOFAN is a reputable manufacturer and exporter of a wide range of fans, specializing in commercial and industrial applications. Founded in August 2015, with over 8 years of experience in Ankara, Turkey, our company has consistently delivered high-quality solutions to our valued customers.

Our Expertise

We are known for our expertise in various fields, including:

Ventilation and Insulation Systems, Central System Heating, Cooling, and Ventilation

Air Handling Units, Paint and Dust Extraction Systems, Steel Construction Structures, Industrial Furnaces

Our Mission

Our primary mission revolves around ensuring customer satisfaction through:

Effective, cost-efficient project execution

Utilizing a dynamic and hardworking team of experts

Our Product Range

Our product portfolio comprises a diverse selection of fans and related equipment, such as:

Domestic fans: inline duct fans, WC fans and...

Commercial fans: kitchen exhaust fans, box fans, axial fans

Industrial fans: high pressure or high air-flow rate axial or centrifugal fans.

With LYOFAN, you can expect reliable, efficient, and cost-effective solutions for all your ventilation and cooling needs. Contact us today to explore our product offerings and benefit from our expertise in creating tailored solutions for your requirements.



Factory: Ostim, 06374 Yeni mahalle/Ankara Turkiye



Head Office: 20020 -DenizliTurkiye



+90 539 790 36 76



+90 501 030 57 00



+90 539 790 36 76



2023



Fans

1 Inline Duct Type Fans

- CIRCULAR DUCT FANS TILTED BACK
- DUCT TYPE FANS WITH EXTERNAL MOTOR
- DUCT TYPE FANS WITH INTERNAL MOTOR

2 Snail Centrifugal Fans

- ALUMINUM BODY SNAIL FAN
- LOW PRESSURE SAIL FANS

3 Cabinet Type Fans

- DIRECT COUPLED RADIAL FAN-KITCHEN HOOD FAN
- CABINET TYPE FANS
- KITCHEN HOOD FANS
- COVERED BLADE CELL FAN

In-Line Duct Fan

They are the fans used between two ducts in ventilation systems with ducts. They have around inlet and outlet in line with the geometrical structure of the surface to be mounted. This commercial Inline Duct Fan is designed to be used in ambient temperatures ranging from -20°C - +50°C. This fan can be used for duct operations in shops, pubs, schools, hotels, offices, restaurants, kitchens, and factories, ensuring clean and odorless air is circulated around the premises.

MOTOR INSULATION CLASS	F CLASS
MOTOR PROTECTION CLASS	IP 44
ENGINE EFFICIENCY CLASS	IE 3
ENGINE TYPE	EXTERNAL ROTOR MOTOR
MOTOR BRAND	-
BODY MATERIAL	GALVANIZED SHEET
BODY COATING	-
IMPELLER MATERIAL	GALVANIZED SHEET
DUTY CYCLE	IEC DUTY CYCLE-S1
OPERATING TEMPERATURE	-20 - + 50 °C
STANDARDS	IEC-60335-2-80,ISO 1940-1



Type	Input power	Voltage	Air flow	Noise level	Transfer	Current	Capacitance	Net weight	Price
	(w)	(v)	(m ³ /h)	dB(A)	(r/min)	(A)	(μF)	(kg)	(EUR)
LIDF 100	80	230	290	47	2600	0.3	2	2.6	30 €
LIDF 125	80	230	410	47	2600	0.36	2.5	2.7	33 €
LIDF 150	85	230	700	50	2600	0.38	2.5	3.2	35 €
LIDF 160	85	230	710	51	2600	0.38	2.5	3.2	35 €
LIDF 200	122	230	1000	52	2675	0.55	4	4.8	46 €
LIDF 250	145	230	1120	54	2685	0.63	5	5.3	51 €
LIDF 315	210	230	1750	57	2615	1.1	7	6.9	62 €



External Motor Rectangular Duct Type Fan

Duct-type aspirators, the engine of which is designed from the outside of the airflow, can be used for ambient ventilation with their low energy consumption and structure that can be mounted directly on prismatic ducts. Since the engine is outside the airflow, the engine is not affected by foreign substances in the passing air.

MOTOR INSULATION CLASS	F CLASS
MOTOR PROTECTION CLASS	IP 44
ENGINE EFFICIENCY CLASS	IE & IE3
ENGINE TYPE	TEFC
MOTOR BRAND	GAMAK-VOLT-WATT
BODY MATERIAL	GALVANIZED SHEET
BODY COATING	-
IMPELLER MATERIAL	GALVANIZED SHEET
DUTY CYCLE	IEC DUTY CYCLE-S1
OPERATING TEMPERATURE	-20 - + 50 °C
STANDARDS	IEC-60335-2-80,ISO 1940-1



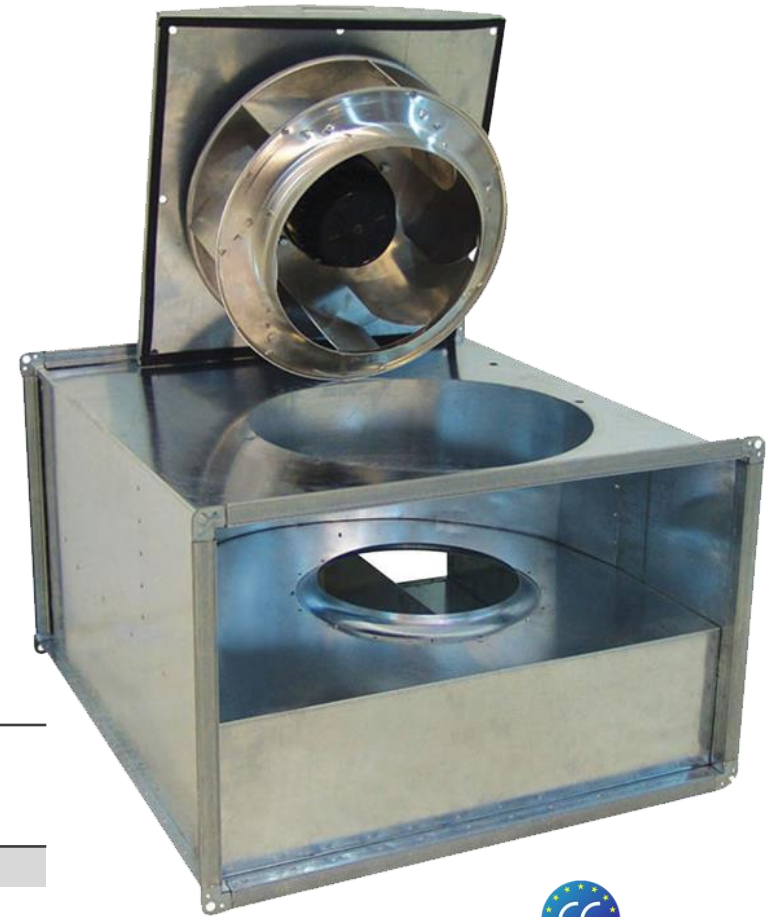
Type	Input power (Kw)	Air flow (m ³ /h)	Transfer (r/min)	width mm	long mm	height mm	Height with motor mm	Net weight (kg)	Price (EUR)
LDKIDF 280	0.18	1150	1400	500	250	565	450	28	244 €
LDKIDF 315	0.25	1600	1400	500	250	565	476	32	270 €
LDKIDF 355	0.37	2300	1400	600	300	760	526	34	281 €
LDKIDF 400	0.55	3300	1400	600	350	750	590	38	338 €
LDKIDF 450	0.75	5000	1400	700	400	790	641	49	416 €
LDKIDF 500	1.1	7000	1400	800	500	900	765	63	494 €
LDKIDF 560	1.5	9800	1400	1000	500	1050	790	74	676 €



In-Line Rectangular Duct Fan

Its structure, which can be mounted directly in the ducts, can be used for ambient ventilation with low energy consumption. The body of the fans is made of high-quality galvanized steel. Thanks to the standard maintenance covers, the engine, and fan blades are intervened without disassembling the device and disassembling the duct installation. The fan is easy to clean. It's suitable for general ventilation applications. It prevents dirt and oil accumulation. It is dynamically balanced.

MOTOR INSULATION CLASS	F CLASS
MOTOR PROTECTION CLASS	IP 44
ENGINE EFFICIENCY CLASS	IE 3
ENGINE TYPE	EXTERNAL ROTOR MOTOR
MOTOR BRAND	–
BODY MATERIAL	GALVANIZED SHEET
BODY COATING	–
IMPELLER MATERIAL	GALVANIZED SHEET
DUTY CYCLE	IEC DUTY CYCLE-S1
OPERATING TEMPERATURE	-20 - + 50 °C
STANDARDS	IEC-60335-2-80,ISO 1940-1

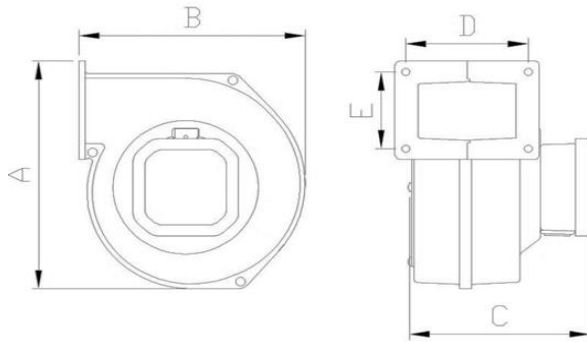


Type	Input power	Air flow	Transfer	width	long	height	Noise level	Net weight	Price
	(w)	(m ³ /h)	(r/min)	mm	mm	mm	dB(A)	(kg)	(EUR)
LKIDF 30-15	90	520	2630	150	300	400	70	7	71 €
LKIDF 40-20-A	104	950	2645	200	400	500	73	10	87 €
LKIDF 40-20-B	130	1150	2675	200	400	500	75	11	93 €
LKIDF 50-25	180	1600	2635	250	500	565	78	15	129 €
LKIDF 60-30	147	2350	1440	300	600	760	70	29	174 €
LKIDF 60-35	380	3400	1420	350	600	765	83	32	206 €
LKIDF 70-40	690	5000	1435	400	700	790	83	46	348 €
LKIDF 80-50	1080	7000	1350	500	800	900	86	66	513 €
LKIDF 100-50	1670	9300	1350	500	1000	1050	86	84	662 €



Forward Curved Aluminum Body Snail Fans

It is generally preferred in local cooling applications. It is used in industrial areas such as dc motor cooling processes, laboratories, buildings, residences, cooling of electrical panels in cooling boilers of machines, and solid fuel boilers. Thanks to their compact structure, they save space. It offers excellent solutions in local cooling applications and heating systems. It is high quality and long-lasting. It has a low noise level, a durable body structure, and high-pressure characteristics. It is combined with durable materials.



MOTOR INSULATION CLASS	F CLASS
MOTOR PROTECTION CLASS	IP 44
ENGINE EFFICIENCY CLASS	IE 3
ENGINE TYPE	EXTERNAL ROTOR MOTOR
MOTOR BRAND	–
BODY MATERIAL	ALUMINIUM
BODY COATING	–
IMPELLER MATERIAL	GALVANIZED SHEET
DUTY CYCLE	IEC DUTY CYCLE-S1
OPERATING TEMPERATURE	-20 - + 50 °C
STANDARDS	IEC-60335-2-80,ISO 1940-1



Type	Input power	Voltage	Blowing	width	long	height	transfer	Price
	(w)	(v)	(E*D)mm	(A)mm	(B)mm	mm	(r/min)	(EUR)
LFS 120	84	230	275	70x90	190	175	2450	35 €
LFS 140	137	230	485	105x115	260	225	2265	41 €
LFS 160	193	230	600	105x115	260	225	2100	46 €



Rare Blade Low Pressure Snail Fans

It is preferred for the removal of large dust particles, sawdust, and marble particles from the air in workshops and working environments. It is also used for the ventilation of dusty and oily environments. The rare blades ensure that the particles in the environment are collected between the propellers and that the operation of the fan is not adversely affected and that any situation shortening the life of the fan is not experienced.

MOTOR YALITIM SINIFI	F CLASS
MOTOR KORUMA SINIFI	IP 55
MOTOR VERİM SINIFI	IE2-IE3
MOTOR TİPİ	AC-TEFC
MOTOR MARKASI	ELK- GAMAK
GÖVDE MALZEMESİ	DKP SHEET METAL
GÖVDE KAPLAMASI	ELECTROSTATIC POWDER COATING
PERVANE MALZAMESİ	DKP SHEET METAL
GÖREV DÖNGÜSÜ	IEC DUTY CYCLE-S1
ÇALIŞMA SICAKLIĞI	-20 - + 50 °C
STANDARTLAR	IEC-60335-2-80,ISO 1940-1



Type	Input Power	Air flow	Voltage	Frequency	Current	Pressure	Transfer	Price
	kW	m3/h	(V)	(Hz)	(A)	Pa	RPM	(EUR)
LNFS 280-1	0.25	1,200	380	50	0.87	150	1400	326 €
LNFS 280-2	1.1	2,850	380	50	2.6	200	2800	343 €
LNFS 315-1	0.37	1,650	380	50	1.2	150	1400	376 €
LNFS 315-2	2.2	4,000	380	50	4	300	2800	441 €
LNFS 355-1	0.55	2,500	380	50	1.6	200	1400	440 €
LNFS 355-2	3	5,900	380	50	6.6	300	2800	526 €
LNFS 400-1	0.75	3,850	380	50	2	200	1400	525 €
LNFS 400-2	5.5	8,700	380	50	8.4	350	2800	763 €
LNFS 450	1.1	6,000	380	50	2.6	200	1400	652 €
LNFS 500	1.5	8,600	380	50	3.5	200	1400	756 €
LNFS 560	3	12,000	380	50	6.6	300	1400	936 €
LNFS 630	5.5	17,800	380	50	8.4	300	1400	1,237 €
LNFS 710	11	28,000	380	50	=	350	1400	1,897 €



Backward Curved Centrifugal fans Belt Drive

Heavy construction BCC (backward curved centrifugal) fans are commonly used for the transportation of clean air or heavy dust laden air in a ducted system.

Sizes range from 315mm to 1000mm. These units are normally mounted on a base.

These fans are always belt driven which allows for a very large scale of various permutations for both volume and pressure.

Changing pulley diameters can deliver any required volume and pressure within the speed limitations of the fan.

MOTOR INSULATION CLASS	F CLASS
MOTOR PROTECTION CLASS	IP 44
ENGINE EFFICIENCY CLASS	IE 3
ENGINE TYPE	EXTERNAL MOTOR
MOTOR BRAND	–
BODY MATERIAL	GALVANIZED SHEET
BODY COATING	–
IMPELLER MATERIAL	GALVANIZED SHEET
DUTY CYCLE	IEC DUTY CYCLE-S1
OPERATING TEMPERATURE	-20 - + 70 °C
STANDARDS	IEC-60335-2-80,ISO 1940-1



Type	Input power	Air flow	Pressure	Voltage	Noise level	Transfer	Speed	Price
	(kw)	(m ³ /h)	(Pa)	(V)	(dB)	(r/min)	M/S	(EUR)
LDBFS-1A	0.25	1,250	450	380	68	1500	9	1,710 €
LDBFS-1	0.37	2,200	450	380	72	1500	10	1,910 €
LDBFS-2A	0.55	2,700	450	380	80	1500	10	2,000 €
LDBFS-2	0.75	4,200	450	380	83	1500	11	2,075 €
LDBFS-3	1.1	6,400	500	380	84	1500	13	2,200 €
LDBFS-4	1.5	6,900	800	380	87	1500	13.5	2,455 €
LDBFS-5	2.2	9,300	800	380	90	1500	15	2,765 €
LDBFS-6	3	12,500	1,600	380	91	1500	16	3,000 €
LDBFS-7	4	14,000	1,600	380	93	1500	16.5	3,230 €
LDBFS-8	5.5	18,000	1,600	380	95	1500	18	3,850 €
LDBFS-9	7.5	20,000	1,600	380	97	1500	19	4,150 €
LDBFS-10	11	22,000	1,800	380	99	1500	19.5	4,275 €
LDBFS-11	15	30,000	1,800	380	101	1500	22	5,150 €
LDBFS-12	18.5	32,000	1,800	380	103	1500	22.5	6,400 €

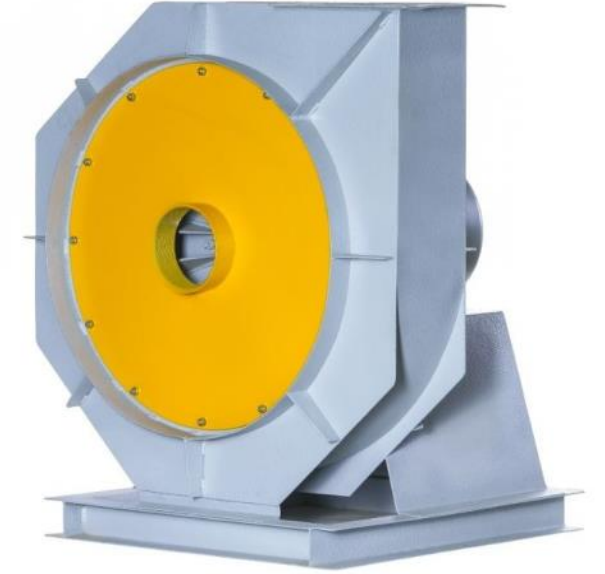


Range of High pressure centrifugal fans with backward curved impeller

These fans provide high performance in transporting large particulate ash dust and evacuate without accumulation of material on the blade thanks to its open blade structure.
Use: for the aspiration of very dusty air containing various types of materials.

The level of use of this series of ventilators is extremely high in the following industries:
sawmills/joineries: for the transportation of sawdust and wood chips;
tanneries: for the transportation of leather trimmings and shavings;
bookbinderies: for the transportation of paper trimmings;
textile industries: for the transportation of yarn waste and long fibers;
industries for the working of plastics: for the transportation of granulates and of nylon trimmings; for the loading of solid combustibles into boilers, etc.

MOTOR YALITIM SINIFI	F CLASS
MOTOR KORUMA SINIFI	IP 44
MOTOR VERİM SINIFI	IE 3
MOTOR TİPİ	EXTERNAL MOTOR
MOTOR MARKASI	ELK- GAMAK
GÖVDE MALZEMESİ	GALVANIZED SHEET
GÖVDE KAPLAMASI	-
PERVANE MALZAMESİ	GALVANIZED SHEET
GÖREV DÖNGÜSÜ	IEC DUTY CYCLE-S1
ÇALIŞMA SICAKLIĞI	-20 - + 70 °C
STANDARTLAR	IEC-60335-2-80,ISO 1940-1



Type	Input power (kw)	Air flow (m ³ /h)	Voltage (v)	Frequency (HZ)	Current (A)	Pressure (pa)	transfer (r/min)	Price (EUR)
LHPF 500	5.5	3,500	380	50	10	3,000	2,935	1,000 €
LHPF 560-1	7.5	5,500	380	50	13.3	3,000	2,930	1,110 €
LHPF 560-2	11	5,500	380	50	19	4,000	2,940	1,350 €
LHPF 630-1	15	5,500	380	50	27	4,700	2,950	1,610 €
LHPF 630-2	18.5	5,500	380	50	32	5,500	2,935	2,000 €



Heat Recovery Units

Heat recovery units are devices produced in order to save energy in neighborhoods where fresh air is required. In the summer, the cooled air in the environment is expelled, and the fresh air to be taken in is cooled. In winter, while the hot air in the environment is expelled, the cold air to be taken in is heated. Thus, energy is saved. No energy source is used while making transactions. Air to air heat recovery is provided.

MOTOR INSULATION CLASS	F CLASS
MOTOR PROTECTION CLASS	IP 44
ENGINE EFFICIENCY CLASS	IE 3
ENGINE TYPE	INTERNAL ROTOR MOTOR
MOTOR BRAND	-
BODY MATERIAL	GALVANIZED SHEET
BODY COATING	-
IMPELLER MATERIAL	ALUMINUM
DUTY CYCLE	IEC DUTY CYCLE-S1
OPERATING TEMPERATURE	-20 - + 50 °C
STANDARDS	IEC-60335-2-80,ISO 1940-1



Type	Input power	Air flow	width	long	height	Suction (∅)	Heater power	Price
	(w)	(m ³ /h)	(E)mm	(F)mm	(C)mm	(D)mm	(kw)	(EUR)
LRCF 1000	250	1000	930	670	320	250	3	530 €
LRCF 2000	400	2000	1140	985	420	300	6	655 €
LRCF 3000	780	3000	1710	1160	440	355	9	1,038 €
LRCF 4000	1300	4000	1650	1130	520	400	12	1,172 €
LRCF 5000	1700	5000	1850	1220	530	450	15	1,568 €



CONTROL PANEL	
MODEL	PRICE(EUR)
10	288 €
20	288 €
30	288 €
40	288 €
50	288 €



ELECTRIC HEATER	
MODEL	PRICE(EUR)
3 kW - 380 V	358 €
6 kW - 380 V	462 €
9 kW - 380 V	668 €
12 kW - 380 V	787 €
15 kW - 380 V	993 €



KITCHEN HOOD FANS

MOTOR INSULATION CLASS	F CLASS
MOTOR PROTECTION CLASS	IP 55
ENGINE EFFICIENCY CLASS	IE 3- IE 2
ENGINE TYPE	TEFC
MOTOR TYPE	GAMAK-VOLT-WATT
BODY MATERIAL	GALVANIZED SHEET
BODY COATING	-
IMPELLER MATERIAL	GALVANIZED SHEET
DUTY CYCLE	IEC DUTY CYCLE-S1
OPERATING TEMPERATURE	-20 - + 50 °C
STANDARDS	IEC-60335-2-80,ISO 1940-1



Type	Input power	Air flow	width	long	height	Transfer	Price
	(kw)	(m ³ /h)	(E)mm	(F)mm	(C)mm	(r/min)	(EUR)
LKEF 280	0.18	1,100	450	450	450	1450	278 €
LKEF 315	0.25	1,600	500	500	500	1469	350 €
LKEF 355	0.37	2,300	500	500	500	1471	366 €
LKEF 400	0.55	3,300	600	600	600	1478	436 €
LKEF 450	0.75	5,000	700	700	700	1454	551 €
LKEF 500	1.1	7,000	800	800	800	1462	655 €
LKEF 560	1.5	9,800	900	900	900	1464	788 €
LKEF 630	3	14,000	1000	1000	1000	1465	962 €
LKEF 710	4	13,000	1100	1100	1100	950	1,275 €



Round PVC Axial in-line Duct Fan

an ideal choice with its easy installation to the duct, silent operation and low energy consumption. Factory, hospital, office, laboratory, shop- ping mall, cafe, restaurants, parking lot, etc. It is suitable for use in all structures with a round duct system.

MOTOR INSULATION CLASS	F CLASS
MOTOR PROTECTION CLASS	IP 44
MOTOR EFFICIENCY CLASS	–
MOTOR ENCLOSURE TYPE	AC EXTERNAL ROTOR MOTOR
MOTOR BRAND	–
BODY MATERIAL	PLASTIC
BODY COATING	NONE
IMPELLER MATERIAL	PLASTIC-MIXED FLOW
DUTY CYCLE	IEC Duty Cycle-S1
WORKING AMBIENT TEMPERATURE	-20 - +50 °C
DIRECTIVE	IEC-60335-2-80, ISO 1940-1



Type	Input power	Voltage	Air flow	Frequency	Revolution	Noise level	Price
	(w)	(v)	(m ³ /h)	(Hz)	(rpm)	(dB(A))	(EUR)
LAIDF 100	54	230	234	50	2,460	41	32 €
LAIDF 125	56	230	337	50	2,560	46	34 €
LAIDF 150	75	230	504	50	2,490	48	45 €
LAIDF 160	75	230	560	50	2,490	49	45 €
LAIDF 200	111	230	1,012	50	2,410	54	58 €



Metal Axial In-line Duct Fan

These fans can be used when low volume ventilation needs. It is easy to install, has a low noise level and power usage

MOTOR INSULATION CLASS	F CLASS
MOTOR PROTECTION CLASS	IP 44
MOTOR EFFICIENCY CLASS	IE2-IE3
MOTOR ENCLOSURE TYPE	EXTERNAL ROTOR MOTOR
MOTOR BRAND	-
BODY MATERIAL	GALVANIZED SHEET METAL
BODY COATING	ELECTROSTATIC POWDER PAINT
IMPELLER MATERIAL	GALVANIZED SHEET METAL
DUTY CYCLE	IEC Duty Cycle-S1
WORKING AMBIENT TEMPERATURE	-20 - +50 °C
DIRECTIVE	IEC-60335-2-80, ISO 1940-1



Type	Input power	Voltage	Air flow	Frequency	Revolution	Noise level	Price
	(w)	(v)	(m ³ /h)	(Hz)	(rpm)	(dB(A))	(EUR)
LMIDF 200	70	230	680	50	2.650	50	31 €
LMIDF 250	100	230	1.500	50	2.700	52	36 €
LMIDF 300	163	230	2.025	50	2.550	54	42 €
LMIDF 350	240	230	3.110	50	2.250	58	47 €



HBAF WC Fan

High quality PP materials are used in the production of HBAFs. They can be used in bathroom walls or windows

MOTOR INSULATION CLASS	F CLASS
MOTOR PROTECTION CLASS	IP 25
MOTOR EFFICIENCY CLASS	IE2
MOTOR ENCLOSURE TYPE	EXTERNAL ROTOR MOTOR
MOTOR BRAND	
BODY MATERIAL	PP
BODY COATING	OPTIONAL
IMPELLER MATERIAL	PP
DUTY CYCLE	IEC Duty Cycle-S1
WORKING AMBIENT TEMPERATURE	-20 - +50 °C
DIRECTIVE	IEC-60335-2-80, ISO 1940-1



Type	Input power	Voltage	Air flow	Frequency	Revolution	Noise level	Price
	(w)	(v)	(m ³ /h)	(Hz)	(rpm)	(dB(A))	(EUR)
LSB 100	14	230	97	50	2.800	35	6 €
LSB 125	16	230	183	50	2.800	36	7 €
LSB 150	16	230	290	50	2.800	38	10 €



Silent Bathroom Fan

High quality ABS materials are used in the production of HSEFs. They can be used in bathroom walls or windows. With a low-noise level they won't be disturbing the occupants.

MOTOR INSULATION CLASS	F CLASS
MOTOR PROTECTION CLASS	IP 25
MOTOR EFFICIENCY CLASS	IE2
MOTOR ENCLOSURE TYPE	EXTERNAL ROTOR MOTOR
MOTOR BRAND	
BODY MATERIAL	ABS
BODY COATING	OPTIONAL
IMPELLER MATERIAL	ABS
DUTY CYCLE	IEC Duty Cycle-S1
WORKING AMBIENT TEMPERATURE	-20 - +50 °C
DIRECTIVE	IEC-60335-2-80, ISO 1940-1



Type	Input power	Voltage	Air flow	Frequency	Revolution	Noise level	Price
	(w)	(v)	(m ³ /h)	(Hz)	(rpm)	(dB(A))	(EUR)
LSBS 100	8,4	230	90	50	2.800	25	21 €
LSBS 125	10	230	180	50	2.800	30	27 €



HDAXIS Axial In-line Duct Fan

HDAXIS fans can be used when low volume required. It is easy to install to walls and windows. Low noise level and power usage makes it an ideal solution for commercial usage.

MOTOR INSULATION CLASS	F CLASS
MOTOR PROTECTION CLASS	IP 44
MOTOR EFFICIENCY CLASS	-
MOTOR ENCLOSURE TYPE	EXTERNAL ROTOR MOTOR
MOTOR BRAND	-
BODY MATERIAL	GALVANIZED SHEET METAL
BODY COATING	ELECTROSTATIC POWDER PAINT
IMPELLER MATERIAL	GALVANIZED SHEET METAL
DUTY CYCLE	IEC Duty Cycle-S1
WORKING AMBIENT TEMPERATURE	-20 - +50 °C
DIRECTIVE	IEC-60335-2-80, ISO 1940-1



Type	Input power	Voltage	Air flow	Frequency	Revolution	Noise level	Price
	(w)	(v)	(m ³ /h)	(Hz)	(rpm)	(dB(A))	(EUR)
LCAW 200	67	230	680	50	2.700	60	31 €
LCAW 250	110	230	1500	50	2.640	70	36 €
LCAW 300	160	230	2020	50	2.630	72	42 €
LCAW 350	240	230	3110	50	2.280	78	47 €



LCSF Axial Cooling Fan

Those fans can be used to push or pull air for commercial and industrial refrigerators, cold kitchen storage and cold storage. They can be ordered to be blower suction type.

MOTOR INSULATION CLASS	F CLASS
MOTOR PROTECTION CLASS	IP 44
MOTOR EFFICIENCY CLASS	-
MOTOR ENCLOSURE TYPE	AC EXTERNAL ROTOR MOTOR
IMPELLER MATERIAL	ALUMINUM-GALVANIZED
BODY MATERIAL	STEEL GRILLE
BODY COATING	ELECTROSTATIC POWDER PAINT
IMPELLER TYPE	AXIAL
DUTY CYCLE	IEC Duty Cycle-S1
WORKING AMBIENT TEMPERATURE	-20 - +50 °C
DIRECTIVE	IEC-60335-2-80, ISO 1940-1



Type	Input power	Voltage	Air flow	Frequency	Revolution	Noise level	Price
	(w)	(v)	(m ³ /h)	(Hz)	(rpm)	(dB(A))	(EUR)
LCSF250 "S" or "B" TYPE	50	230	1,000	50	1,380	89	36 €
LCSF300 "S" or "B" TYPE	90	230	1,700	50	1,370	91	41 €
LCSF350 "S" or "B" TYPE	138	230	2,980	50	1,370	95	70 €
LCSF400 "S" or "B" TYPE	180	230	3,900	50	1,350	96	75 €
LCSF450 "S" or "B" TYPE	250	230	5,100	50	1,380	99	88 €



LTS Circular Inline Silent Bathroom Fan

High quality PP materials are used in the production of PTS's. They can be used in bathroom walls or windows

MOTOR INSULATION CLASS	F CLASS
MOTOR PROTECTION CLASS	IP 25
MOTOR EFFICIENCY CLASS	IE2
MOTOR ENCLOSURE TYPE	EXTERNAL ROTOR MOTOR
MOTOR BRAND	-
BODY MATERIAL	PP
BODY COATING	OPTIONAL
IMPELLER MATERIAL	PP
DUTY CYCLE	IEC Duty Cycle-S1
WORKING AMBIENT TEMPERATURE	-20 - +50 °C
DIRECTIVE	IEC-60335-2-80, ISO 1940-1



Type	Input power	Voltage	Air flow	Frequency	Revolution	Noise level	Price
	(w)	(v)	(m ³ /h)	(Hz)	(rpm)	(dB(A))	(EUR)
LTS 100	14	230	107	50	2,800	35	6 €
LTS 125	18	230	190	50	2,800	36	7 €
LTS 150	22	230	300	50	2,800	38	10 €



ROOF TYPE AXIAL FAN

They can be used in stair and elevator pressurization.
They serve as ambient ventilation or exhaust.
Production at desired flow rate and pressure
Aluminum or Plastic wing option

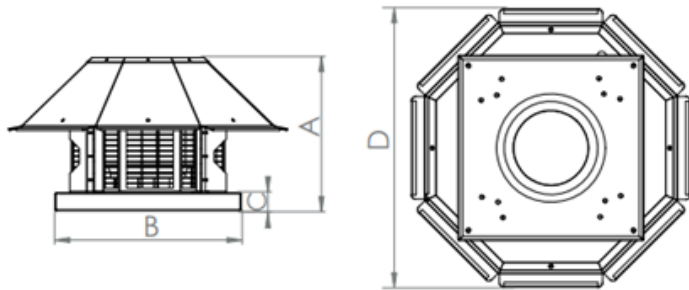


Type	Input power	Voltage	Air flow	Noise level	width	long	height	Price
	(kw)	(v)	(m ³ /h)	dB(A)	mm	mm	mm	(EUR)
LRAF 400-5-25	0.37	380	3,000	66	500	500	800	295 €
LRAF 450-5-25	0.55	380	4,400	69	550	550	800	318 €
LRAF 500-5-25	0.55	380	6,000	72	600	600	800	340 €
LRAF 560-5-25	0.75	380	8,200	75	650	650	800	442 €
LRAF 630-5-30	1.1	380	14,000	80	750	750	850	499 €
LRAF 710-5-30	1.5	380	20,000	83	850	850	850	577 €
LRAF 800-5-30	2.2	380	26,000	85	950	950	850	722 €
LRAF 800-5-35	3	380	32,000	89	950	950	850	752 €
LRAF 900-5-35	4	380	40,000	90	1050	1050	1200	962 €
LRAF 900-5-40	5.5	380	48,000	93	1050	1050	1200	1,092 €
LRAF 1000-5-40	7.5	380	56,000	94	1150	1150	1200	1,220 €
LRAF 900-8-40	11	380	49,000	94	1050	1050	1200	1,395 €
LRAF 1000-8-40	15	380	65,000	97	1150	1150	1200	1,726 €
LRAF 1000-8-45	18.5	380	73,000	99	1150	1150	1200	2,002 €
LRAF 1120-8-40	22	380	90,000	100	1250	1250	1200	2,912 €
LRAF 1120-8-45	30	380	100,000	102	1250	1250	1200	3,380 €



Horizontal Discharge Centrifugal Fan With Motor Out Of Air

This fan can be used where the air that it exhausts has particles in it that would damage the motor. Vertical discharge allows it to be used in close quarters with other things like chimneys and fans.



MOTOR INSULATION CLASS	F CLASS
MOTOR PROTECTION CLASS	IP 55
MOTOR EFFICIENCY CLASS	IE2-IE3
MOTOR ENCLOSURE TYPE	TEFC
MOTOR BRAND	GAMAK-VOLT-WATT-ELK
BODY MATERIAL	GALVANIZED SHEET METAL
BODY COATING	POWDER COATED
IMPELLER MATERIAL	GALVANIZED SHEET METAL
DUTY CYCLE	IEC Duty Cycle-S1
WORKING TEMPERATURE	-20 - +50 °C
STANDARDS	IEC-60335-2-80, ISO 1940-1



Type	Input power	Voltage	Air flow	Noise level	A	B	D	Price
	(kw)	(v)	(m ³ /h)	dB(A)	mm	mm	mm	(EUR)
LRDRF 400-5-25	0.37	380	2,850	66	500	800	600	398 €
LRDRF 450-5-25	0.55	380	3,800	69	550	850	600	428 €
LRDRF 500-5-25	0.55	380	4,750	72	600	900	630	458 €
LRDRF 560-5-25	0.75	380	7,125	75	660	960	630	524 €
LRDRF 630-5-30	1.1	380	11,400	80	730	1030	700	613 €
LRDRF 710-5-30	1.5	380	16,150	83	810	1110	700	778 €
LRDRF 800-5-30	2.2	380	21,780	85	900	1200	750	886 €
LRDRF 800-5-35	3	380	26,600	89	900	1200	750	1,016 €



Horizontal Discharge Centrifugal Fan With Motor Out Of Air

LDRF fans can be used where the air that it exhausts has particles in it that would damage the motor.

MOTOR INSULATION CLASS	F CLASS
MOTOR PROTECTION CLASS	IP 55
MOTOR EFFICIENCY CLASS	IE2-IE3
MOTOR ENCLOSURE TYPE	-
MOTOR BRAND	GAMAK-VOLT-WATT-ELK
BODY MATERIAL	GALVANIZED SHEET METAL
BODY COATING	ELECTROSTATIC POWDER PAINT
IMPELLER MATERIAL	GALVANIZED SHEET METAL
DUTY CYCLE	IEC Duty Cycle-S1
WORKING AMBIENT TEMPERATURE	-20 - +50 °C
DIRECTIVE	IEC-60335-2-80, ISO 1940-1



120 °C

Type	Input power	Voltage	Flow Rate	Noise level	Frequency	Revolution	Price
	(kw)	(v)	(m ³ /h)	dB(A)	Hz	rpm	(EUR)
LDRF 280	0,18	380	1.100	73	50	1.450	192 €
LDRF 315	0,25	380	1.600	73	50	1.469	240 €
LDRF 355	0,37	380	2.300	75	50	1.471	265 €
LDRF 400	0,55	380	3.300	78	50	1.478	306 €
LDRF 450	0,75	380	5.000	70	50	1.454	363 €
LDRF 500	1,10	380	7.000	83	50	1.462	433 €
LDRF 560	1,50	380	9.800	74	50	1.464	582 €



Roof Mounted Horizontal Discharge Centrifugal Fan

LHDRF fans can be used in low to medium volume projects and can be mounted on the roof. Easy-to-install with long-lasting motor and efficient impeller.

MOTOR INSULATION CLASS	F CLASS
MOTOR PROTECTION CLASS	IP 44
MOTOR EFFICIENCY CLASS	IE2-IE3
MOTOR ENCLOSURE TYPE	EXTERNAL ROTOR MOTOR
MOTOR BRAND	-
BODY MATERIAL	GALVANIZED SHEET METAL
BODY COATING	ELECTROSTATIC POWDER PAINT
IMPELLER MATERIAL	GALVANIZED SHEET METAL
DUTY CYCLE	IEC Duty Cycle-S1
WORKING AMBIENT TEMPERATURE	-20 - +50 °C
DIRECTIVE	IEC-60335-2-80, ISO 1940-1



Type	Input power	Voltage	Flow Rate	Noise level	Frequency	Revolution	Price
	(W)	(v)	(m ³ /h)	dB(A)	Hz	rpm	(EUR)
LHDRF 190	90	230	520	70	50	2.600	63 €
LHDRF 225	104	230	950	73	50	2.675	73 €
LHDRF 250	130	230	1.150	75	50	2.685	83 €
LHDRF 280	180	230	2.000	78	50	2.615	116 €
LHDRF 355	147	230	2.350	70	50	1.365	198 €
LHDRF 400	380	230	3.400	83	50	1.365	265 €
LHDRF 450	690	230	5.000	83	50	1.365	333 €
LHDRF 500	1.080	230 or 380	7.000	86	50	1.365	437 €
LHDRF 560	1.670	380	9.300	86	50	1.365	662 €



Axial Pressurization Fan

LATF Axial Pressurization Fans are used in staircases, elevator shafts and other needs for pressurization. It can be used in high volume-low pressure systems

MOTOR INSULATION CLASS	F CLASS
MOTOR PROTECTION CLASS	IP 55
MOTOR EFFICIENCY CLASS	IE2-IE3
MOTOR ENCLOSURE TYPE	TEFC
MOTOR BRAND	GAMAK-VOLT-WATT-ELK
BODY MATERIAL	GALVANIZED SHEET METAL
BODY COATING	OPTIONAL
IMPELLER MATERIAL	ALUMINIUM
DUTY CYCLE	IEC Duty Cycle-S1
WORKING AMBIENT TEMPERATURE	-20 - +50 °C
DIRECTIVE	IEC-60335-2-80, ISO 1940-1



Type	Input power	Voltage	Air flow	Noise level	inner diameter	External diameter	width	Price
	(kw)	(v)	(m ³ /h)	dB(A)	mm	mm	mm	(EUR)
LATF 400-5-25	0.37	380	3,000	66	400	480	320	191 €
LATF 450-5-25	0.55	380	4,400	69	450	530	320	222 €
LATF 500-5-25	0.55	380	6,000	72	500	580	320	242 €
LATF 560-5-25	0.75	380	8,200	75	560	640	320	274 €
LATF 630-5-30	1.1	380	14,000	80	630	710	420	310 €
LATF 710-5-30	1.5	380	20,000	83	710	790	420	368 €
LATF 800-5-30	2.2	380	26,000	85	800	880	420	435 €
LATF 800-5-35	3	380	32,000	89	800	880	420	479 €
LATF 900-5-35	4	380	40,000	90	900	980	520	568 €
LATF 900-5-40	5.5	380	48,000	93	900	980	520	704 €
LATF 1000-5-40	7.5	380	56,000	94	1000	1080	520	793 €
LATF 900-8-40	11	380	49,000	94	900	980	520	1,148 €
LATF 1000-8-40	15	380	65,000	97	1000	1080	520	1,301 €
LATF 1000-8-45	18.5	380	73,000	99	1000	1080	520	1,524 €
LATF 1120-8-40	22	380	90,000	100	1120	1200	520	1,923 €
LATF 1120-8-45	30	380	100,000	102	1120	1200	520	2,126 €



OPTIONS



GRILLE GUARD

SIZE	PRICE
450	30 €
500	37 €
560	39 €
630	45 €
710	60 €
800	75 €
900	94 €
1000	142 €



SUPPORT FEET

SIZE	PRICE
450	30 €
500	33 €
560	37 €
630	43 €
710	54 €
800	69 €
900	85 €
1000	127 €



DUCT FLANGE

SIZE	PRICE
450	52 €
500	58 €
560	63 €
630	69 €
710	79 €
800	93 €
900	99 €
1000	107 €



CONNECTOR

SIZE	PRICE
450	118 €
500	130 €
560	142 €
630	157 €
710	179 €
800	207 €
900	222 €
1000	248 €



RUBBER PAD

SIZE	PRICE
450	48 €
500	48€
560	48€
630	48€
710	64 €
800	64 €
900	64 €
1000	64 €



SPRING

SIZE	PRICE
450	142 €
500	142 €
560	142 €
630	142 €
710	192 €
800	192 €
900	192 €
1000	192 €

- 5, 8, 12, or 16 Blade Fan
- System Automation
- Two-Speed Motor

BELT DRIVEN AXIAL FAN

Belt driven axial fans can be used when the motor should be out of the airstream. With its belt drive system clients can choose the revolution at the order.

It comes with mounting feet as standard.

MOTOR PROTECTION CLASS	IP 55
MOTOR INSULATION CLASS	F CLASS
MOTOR EFFICIENCY CLASS	IE2-IE3
MOTOR BRAND	GAMAK-VOLT-WAT
MOTOR ENCLOSURE TYPE	TEFC
BODY MATERIAL	GALVANIZED SHEET METAL
BODY COATING	OPTIONAL
IMPELLER TYPE	AXIAL
IMPELLER MATERIAL	ALUMINIUM SHEET METAL
DUTY CYCLE	IEC Duty Cycle-S1
WORKING AMBIENT TEMP	-20 - +50 °C

TYPE	VOLTAGE (V)	FREQUENCY (Hz)	POWER (KW)	REV. (RPM)	FLOW RATE (m3/h)	SOUND PRESSURE dB(A) 3m	Price (EUR)
LATF-D 400-5-25	380	50	0,37	1.450	2.895	66	421 €
LATF-D 450-5-25	380	50	0,55	1.456	4.180	69	494 €
LATF-D 500-5-25	380	50	0,55	1.453	5.845	72	520 €
LATF-D 560-5-25	380	50	0,75	1.466	8.150	75	572 €
LATF-D 630-5-30	380	50	1,10	1.465	13.480	80	650 €
LATF-D 710-5-30	380	50	1,50	1.472	19.210	83	754 €
LATF-D 800-5-30	380	50	2,20	1.459	25.560	85	858 €
LATF-D 800-5-35	380	50	3,00	1.463	30.940	89	926 €
LATF-D 900-5-35	380	50	4,00	1.471	39.250	90	1,092 €
LATF-D 900-5-40	380	50	5,50	1.472	44.635	93	1,248 €
LATF-D 1000-5-40	380	50	7,50	1.478	54.570	94	1,352 €
LATF-D 900-8-40	380	50	11,00	1.454	46.200	94	1,742 €
LATF-D 1000-8-40	380	50	15,00	1.456	62.250	97	2,018 €
LATF-D 1000-8-45	380	50	18,50	1.458	69.070	99	2,215 €
LATF-D 1120-8-40	380	50	22,00	1.471	86.620	100	2,860 €
LATF-D 1120-8-45	380	50	30,00	1.474	95.270	102	3,536 €



WALL MOUNTED EXHAUST FAN

Fan blades are made of stainless steel. Maximum blade efficiency and special inclined blade design, Maximum energy saving.

Automatically opening the shutter on the front panel, special design protection wire on the rear panel

Usage areas; It is used for all closed areas with ventilation problems, ventilation, and cooling of poultry farms, ventilation and cooling of cattle barns, ventilation and cooling of greenhouses, factory, workshop, and similar places to clean gas, smoke, dust, bad odor, etc.



Type	Maximum Air flow (m ³ /h)	Power (kw)	Voltage (v)	Nominal propeller speed rpm	Propeller diameter mm(Inch)	Price (EUR)
LEXF100	20,500	0.37	380/50H	610	915(30)	330 €
LEXF140	40,500	1.1	380/50H	439	1235(36)	350€



WALL MOUNTED EXHAUST FAN

Our fans boast a casing made of electrostatic powder-coated sheet metal for enhanced durability, while the impeller is crafted from sturdy plastic. This combination ensures top-notch performance in various settings, including factories, stock depots, dye houses, shopping centers, and large halls.

For added versatility, the fan speed can be effortlessly adjusted using an optional controller, providing you with precise control over the cooling process. Choose our fans for an advanced and customizable cooling solution tailored to your specific needs.

MOTOR INSULATION CLASS	F CLASS
MOTOR PROTECTION CLASS	IP 55
ENGINE EFFICIENCY CLASS	IE 3- IE 2
ENGINE TYPE	TEFC
MOTOR BRAND	GAMAK-VOLT-WATT
BODY MATERIAL	GALVANIZED SHEET
BODY COATING	ELECTROSTATIC COLOUR
IMPELLER MATERIAL	METAL-PLASTIC
DUTY CYCLE	IEC DUTY CYCLE-S1
OPERATING TEMPERATURE	-20 - + 50 °C
STANDARDS	IEC-60335-2-80,ISO 1940-1



Type	Voltage (v)	Frequency (HZ)	Input Power (kw)	Speed (rpm)	Air flow (m ³ /h)	Noise level (dB)	Price (EUR)
LWAF 400-5-25	380	50	0.37	1450	2,950	66	190 €
LWAF 450-5-25	380	50	0.55	1456	4,250	69	223 €
LWAF 500-5-25	380	50	0.55	1453	6,000	72	232 €
LWAF 560-5-25	380	50	0.75	1466	8,200	75	267 €
LWAF 630-5-30	380	50	1.1	1465	13,600	80	319 €
LWAF 710-5-30	380	50	1.5	1472	19,400	83	366 €
LWAF 800-5-30	380	50	2.2	1459	26,000	85	435 €
LWAF 800-5-35	380	50	3	1463	30,950	89	482 €
LWAF 900-5-35	380	50	4	1471	40,000	90	597 €
LWAF 900-5-40	380	50	5.5	1472	45,500	93	709 €
LWAF 1000-5-40	380	50	7.5	1478	55,000	94	798 €



All You Need at LYOFAN

Lyofan

Factory: Ostim, 06374 Yeni mahalle/Ankara Turkiye

Head Office:

Akçeşme Mah, Şehit Koçanoğlu Cad, Blok 20/B – No: 20 Denizli/Turkey

20020 – VAT : 99269378890

Whatsapp: +90 534 063 5887

TEL: +90 539 790 3676

sales.lyofan@outlook.com

